

transferring manuscripts using Editorial Manager

Dr. Lisa Wylie
Editorial Operations Manager
Research Communications
Wiley

WILEY

internal editorial office structure



WILEY

new editorial office system

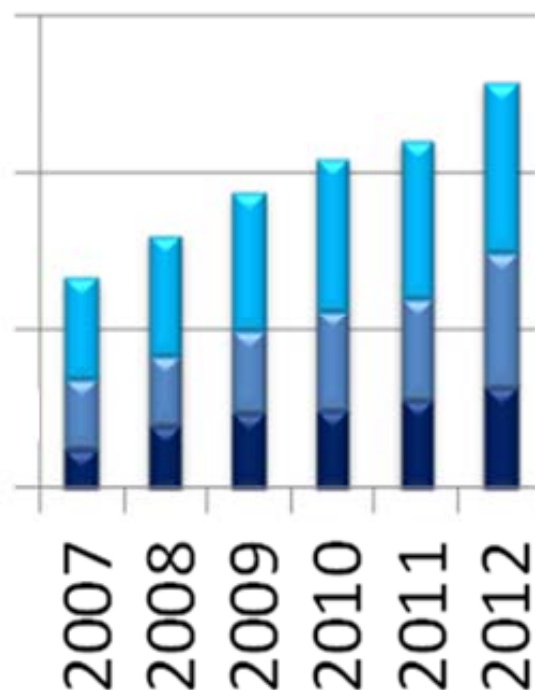
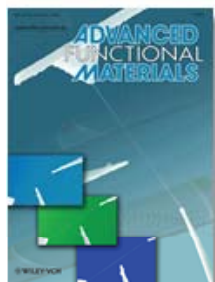
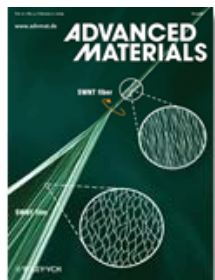
- Rolled out EM over the last year to materials and physics journals groups
- One people-sharing group, common pool of editors, reviewers, authors
- In-house staff generally make it easier to innovate and change workflows as desired

materials science & physics journals



WILEY

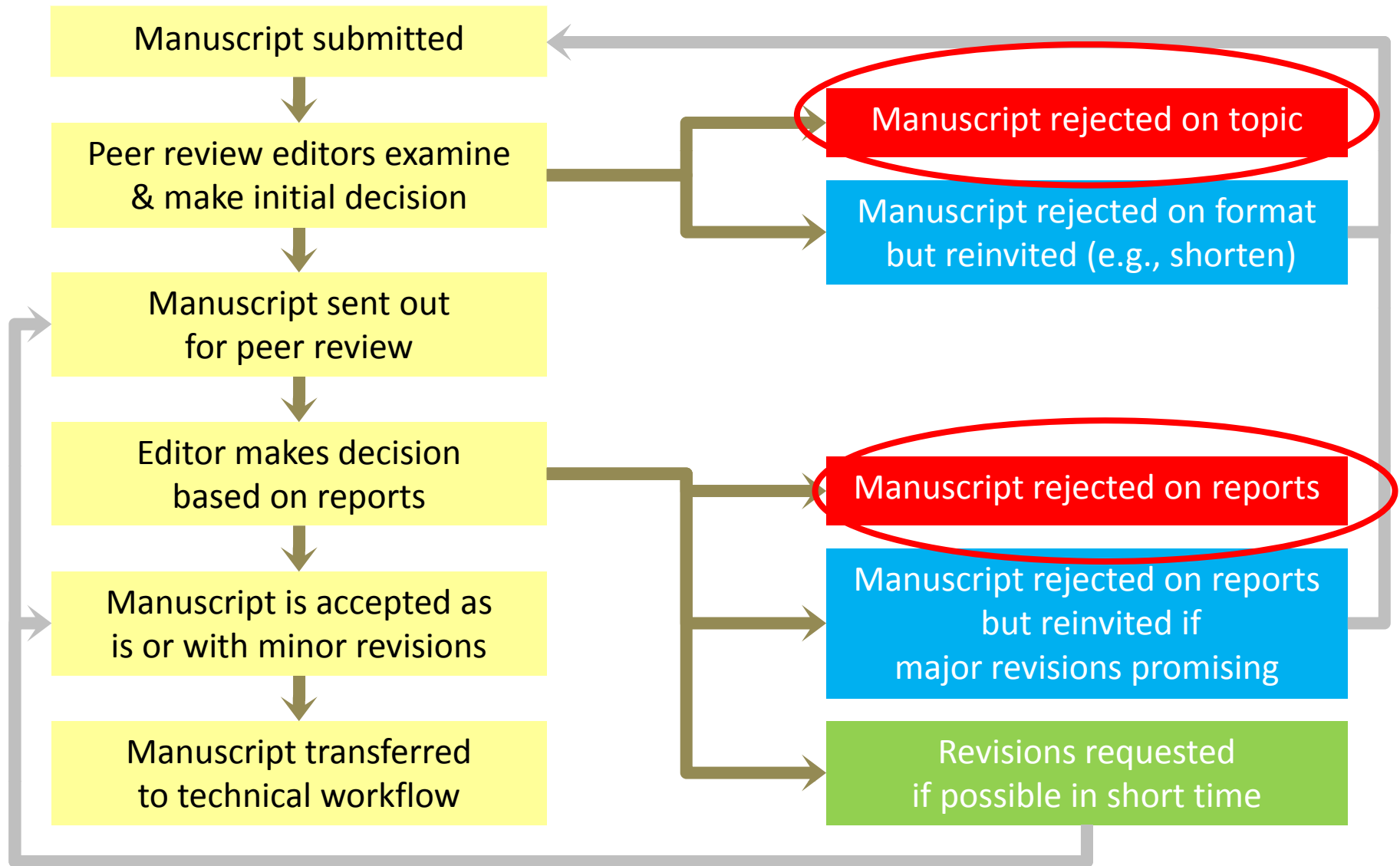
submissions – too much to lose



High rejection rate

WILEY

the peer-review workflow

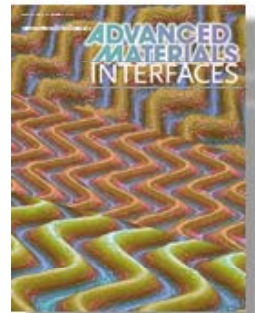
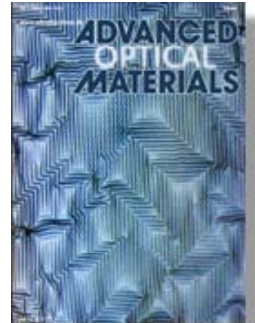


beginning to make an impact

- 200 successful transfers since August
- Editors can recommend choices to authors, who can select a destination simply by clicking a link
- Saves authors the hassle of resubmission
- Editorial input saves time at receiving journal

feeding the newborns

Transferring manuscripts from the established titles allows us to set quality benchmarks for our new titles and feed them with excellent research papers.



WILEY

future growth

- February – will add further internal titles to the portal, permitting further distribution of content
- Later 2014 – externally edited materials science journals will also transition.

Thank you!

WILEY